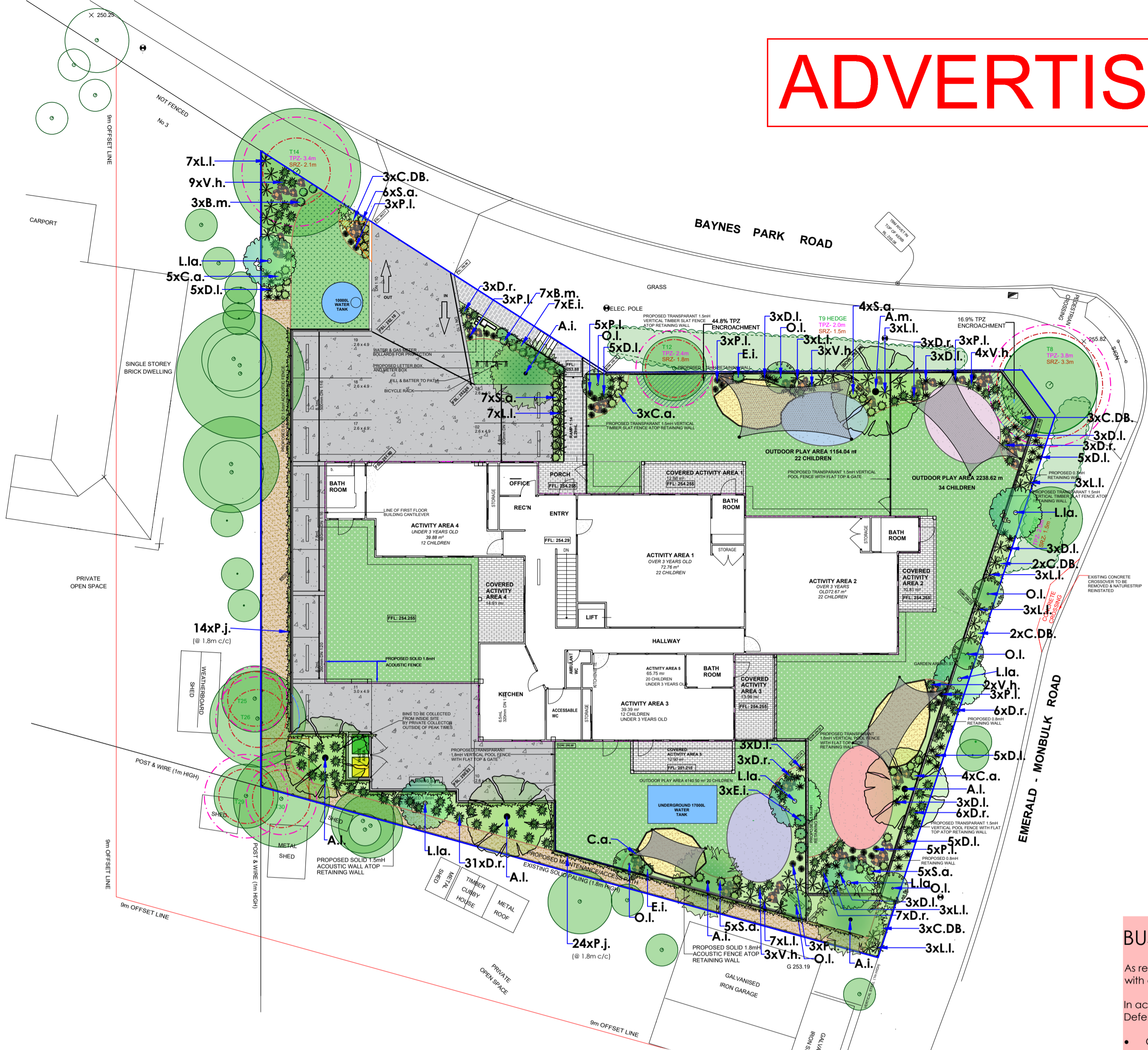


# ADVERTISED



### PLANT KEY

Code	Botanical Name	Common Name	Ht. x Width at Maturity	Pot Size / Planted Height	No. Req
<b>CANOPY TREES</b>					
A.i.	<i>Acacia implexa</i>	Lightwood	6-9x4-6m	40cm/2m	3
A.m.	<i>Acacia melanoxylon</i>	Blackwood	8-14x5-8m	40cm/2m	1
A.l.	<i>Allocasurina littoralis</i>	Black She Oak	7-10x4-7m	40cm/2m	3
<b>SHRUBS (&gt; 1m HIGH)</b>					
L.l.a.	<i>Leptospermum lanigerum</i>	Woolly Tea-tree	3-4x2-3m	25cm	6
O.l.	<i>Oleria lirata</i>	Snowy Daisy Bush	2.5-3x1-2m	25cm	7
<b>LOW SHRUBS &amp; GROUNDCOVERS</b>					
B.m.	<i>Brachycome multifida</i>	Native Daisy	0.2x0.6m	15cm	10
C.a.	<i>Chrysocephalum apiculatum</i>	Common Everlasting	0.1x1m	15cm	13
C.DB.	<i>Correa 'Dusky Bells'</i>	Pink Correa	0.3x1m	15cm	13
D.r.	<i>Dichondra repens</i>	Kidney Weed	0.1x1.2m	15cm	62
E.i.	<i>Epacris impressa</i>	Common Heath	0.8x0.6m	20cm	12
S.a.	<i>Scaevola aemula</i>	Fairy Fan Flower	0.3x1m	15cm	27
V.h.	<i>Viola hederacea</i>	Native Violet	0.05x1m	15cm	21
<b>ACCENT PLANTS</b>					
D.l.	<i>Dianella laevis</i>	Smooth Flax Lily	0.6x0.8m	15cm	46
L.l.	<i>Lomandra longifolia ssp. longifolia</i>	Mat Rush	1x1m	15cm	42
P.l.	<i>Poa labillardieri var. labillardieri</i>	Tussock Grass	0.6x0.6m	15cm	28
<b>CLIMBING PLANTS</b>					
P.j.	<i>Pandorea jasminoides</i>	Bower of Beauty	climber	15cm	38

### LANDSCAPE LEGEND

- EXISTING TREE TO BE RETAINED (Refer to Tree Assessment by Urban Forestry)
- PROPOSED EVERGREEN CANOPY TREES
- SHRUBS (>1m High)
- LOW SHRUBS & GROUNDCOVERS (<1m High)
- ACCENT PLANTS
- CLIMBING PLANTS
- MULCHED GARDEN BEDS
- TURF (Sir Walter Buffalo, or similar)
- PERMEABLE SYNTHETIC TURF/SOFTFALL SURFACE (Indicative area and locations only)
- PROPOSED PERMEABLE TOPPING SURFACE ('Dromana' gravel toppings or similar - Min depth 80mm over free draining subgrade such as 80mm depth crushed rock)
- COLOURED RUBBER SOFTFALL SURFACE UNDER FIXED PLAY EQUIPMENT (Indicative area and location only)
- SAND PIT (Indicative area and location only)
- SHADE SAIL (Indicative size and location only)
- MUD STONE (Indicative size and location only)
- PROPOSED TREATED PINE TIMBER GARDEN BED EDGING (30x80mm)
- PROPOSED TREATED PINE TIMBER SLEEPER EDGE TO SAND PITS (1200x200x50mm)
- CONCRETE PAVING (To Architect's/Engineer's details)
- PROPOSED NON-SLIP PAVING TILES (To Architect's/Engineer's details)

### EXISTING TREE DATA - Extracted from the 'Arboricultural Assessment & Report' by 'Urban Forestry'

Tree No.	Common Name	Botanical Name	Origin	HxW (m)	SRZ (m)	TPZ (m)	Health	Canopy	Stem	Age	Significance	ULE
4	James Stirling	<i>Pittosporum tenuifolium</i>	Non-native	2x1	1.5	2.0	G	G	G	M	M	>20
8	Rhododendron	<i>Rhododendron sp.</i>	Non-native	4x7	3.3	3.8	F	G	G	M	M	<15
9	James Stirling	<i>Pittosporum tenuifolium</i>	Non-native	2x1	1.5	2.0	G	G	G	M	M	>20
12	Photinia	<i>Photinia glabra</i>	Non-native	4x4	1.8	2.4	F	F	G	M	L	<15
14	Photinia	<i>Photinia glabra</i>	Non-native	8x6	2.1	3.4	F	G	G	M	M	<10
25	James Stirling	<i>Pittosporum tenuifolium</i>	Non-native	6x4	1.7	2.0	G	G	G	M	M	>20
26	James Stirling	<i>Pittosporum tenuifolium</i>	Non-native	6X5	1.8	2.6	G	G	G	M	M	>20
29	Flowering Cherry	<i>Prunus cerasifera</i>	Non-native	7X4	1.7	2.6	F	G	G	SM	L	<20
30	Wild Tobacco Tree	<i>Solanum mauritianum</i>	Non-native	5X6	1.8	2.2	F	G	F	M	L	<10

### BUSHFIRE MANAGEMENT OVERLAY

As requested by Council, additional planting has been added to the Landscape Plan (Rev 01). This may not comply with all the requirements listed below for defensible space.

In accordance with Clause 44.06 and Schedule 53.02 the proposed landscaping must confirm to Defendable space requirements and in accordance with the following:

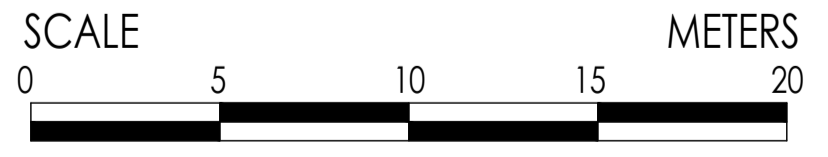
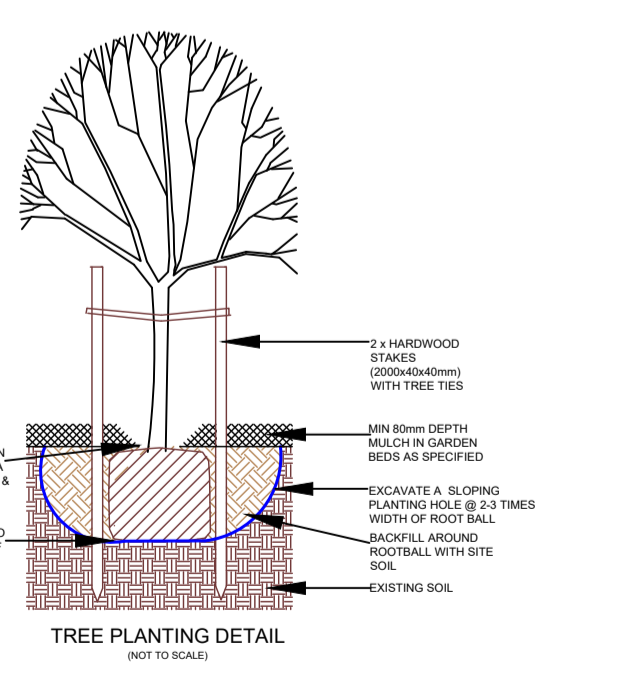
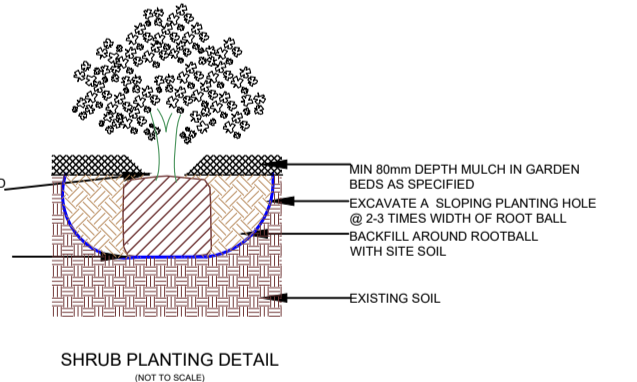
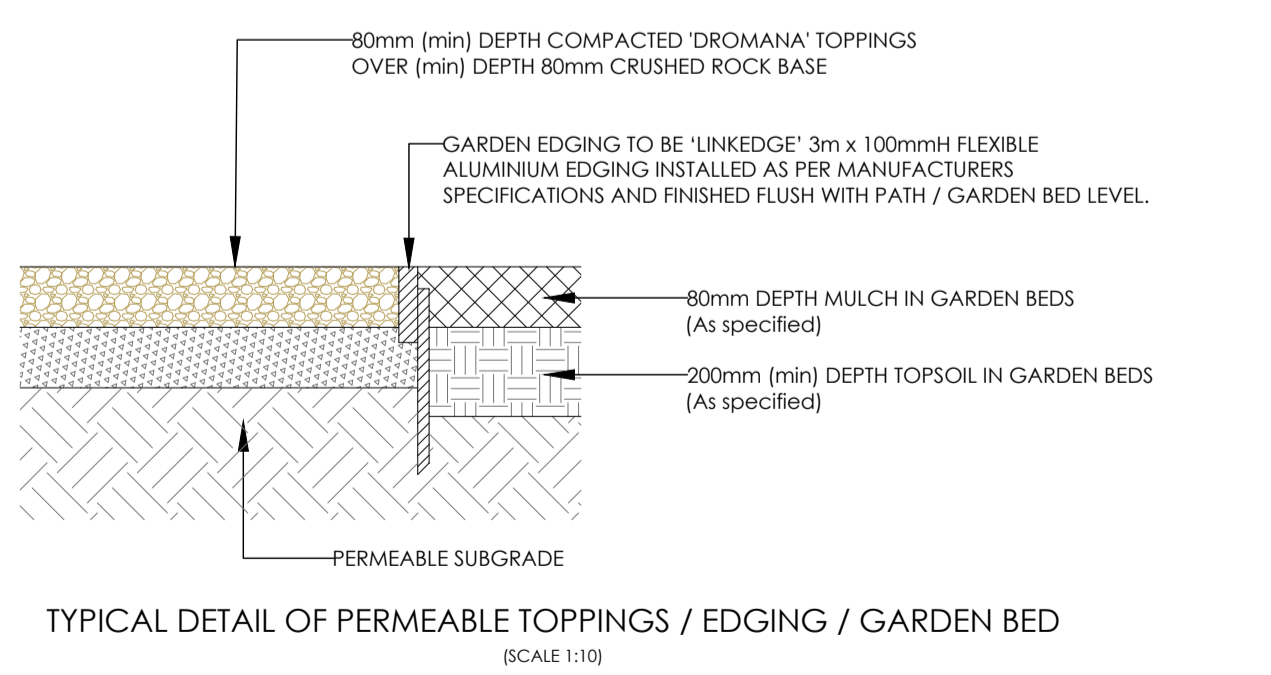
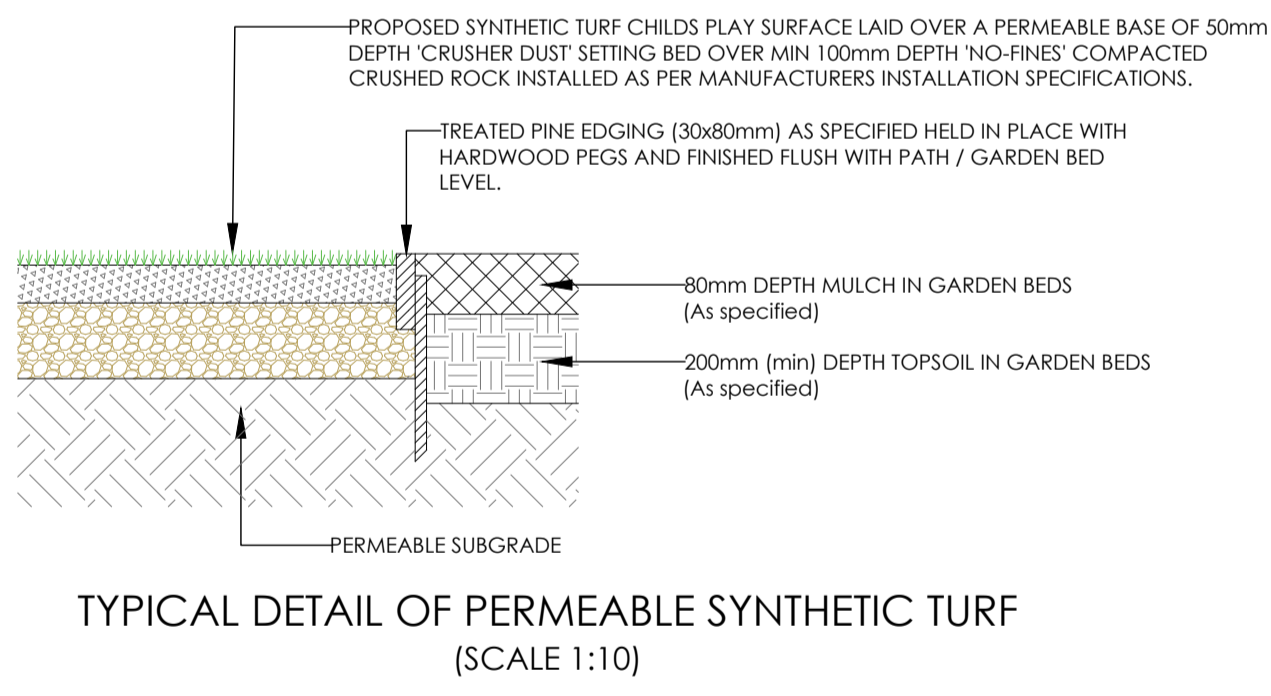
- Grass must be short cropped and maintained during the declared fire danger period.
- All leaves and vegetation debris must be removed at regular intervals during the declared fire danger period.
- Within 10 metres of a building, flammable objects must not be located close to the vulnerable parts of the building.
- Plants greater than 10 centimetres in height must not be placed within 3m of a window or glass feature of the building.
- Shrubs must not be located under the canopy of trees.
- Individual and clumps of shrubs must not exceed 5 sq. metres in area and must be separated by at least 5 metres.
- Trees must not overhang or touch any elements of the building.
- The canopy of trees must be separated by at least 5 metres.
- There must be a clearance of at least 2 metres between the lowest tree branches and ground level.

### GENERAL NOTES

- The Landscape Contractor must refer to architects / engineering drawings for all hard surfacing & paving driveway details.
- This plan is intended for soft landscaping and associated landscape materials and must not be used for any other purposes.
- All existing tree (and hedge) information has been extracted from the Arborist's report prepared by Urban Forestry. Faulkner & Chapman have made no assessment of the trees on site and neighbouring properties and assume all information provided to be correct.
- The Landscape Contractor must verify all dimensions and areas prior to commencing any work or placing any orders for materials.
- The Landscape Contractor must determine the location of all underground services prior to commencing any work on site and shall be liable for any damage to services or conduits.
- The Landscape Contractor must immediately report any perceived errors or omissions in the landscape drawings to the Project Manager and Client.
- Where any conflict occurs between proposed tree locations and infrastructure, such as light poles or powerlines, tree(s) must be relocated or removed.
- The Landscape Contractor must confirm all plant quantities prior to ordering.
- Faulkner & Chapman accepts no responsibility for establishment or maintenance of the landscaping proposed on the Landscape Plan.
- Proposed outdoor play spaces are subject to future detail design and in accordance with all relevant Australian Standards.

### ESTABLISHMENT & MAINTENANCE NOTES

- The site is to be cleared of all debris and builders rubble.
- All weed species on site shall be eradicated.
- SOILS: Soils shall be incorporated into garden bed areas. A 5-way 'Landscape Blend' soil mix, or any weed free sandy loam/clay mix with added compost, should be added to a minimum depth of about 200mm. (Burdetts G/S - 9789 8266).
- PLANTING:
  - Plant species shall be true to type and there should be no alterations or substitution of nominated species or cultivars without the written consent of the Landscape Architect/Designer.
  - All plant stock shall be checked by Contractor and must be healthy and disease free.
  - Planting must be undertaken in accordance with sound horticultural practices, with holes dug to twice the size of the root ball. Holes should be backfilled, to top of root ball. Avoid excessive compaction of soil.
  - All plants must be thoroughly hand watered just after planting.
  - All trees must comply with Australian Standard AS2303:2018 - Tree Stock for Landscape Use.
  - All trees must be planted by an AQF Level 3 Qualified Arborist, Landscape Gardener or Horticulturalist.
  - Consider appropriate offsets (50% of expected mature width) from footpaths for all garden bed planting at set out.
- FERTILIZER: Slow release fertiliser, suitable for mixed plant species (eg: 9-month osmocote), shall be applied at time of planting in accordance with manufacturer's recommended dose rates and application methods.
- MULCH: All garden bed areas shall be mulched to a minimum depth of 80mm with a fine grade 'pine bark/eauca mulch' blend. Except within child play areas where mulch to be min 80mm depth coarse grade 'soft fall' pine bark mulch.
- IRRIGATION: An automated 20mm PVC irrigation system to be installed to all garden bed areas. Typically use 'Netafilm Scopelime' 2lph non pressure compensating 13mm 'Trickle Tube' irrigation system @ 300mm centres for garden beds (or similar).
- CLIMBING PLANTS SUPPORT: Approx 4mm galvanised Mesh (Or lightweight reinforcing mesh) with approx 150x150mm openings to be fixed adjacent to fence line where climbing plants are shown. Mesh to have a total width of 3metres per plant. Mesh to be fixed to self supporting posts [Such as 70x70mm 2.4mH Galvanised posts set in 300x300x500mm rapid set concrete footings].
- DRIVEWAY: To be colored concrete (to Architects / Engineer's details).
- PERMEABLE PAVING: All 'Permeable' paving to per details and/or Engineer's details.
- GARDEN EDGING: Garden bed / lawn / path edging to be 30x80mm treated pine edging held in place with hardwood pegs and galvanised screw. Edging to be finished flush with synthetic lawn level.
- SYNTHETIC TURF: All synthetic turf to be laid on a permeable base of min 100mm depth 'No-Fines' compacted crushed rock over 50mm depth 'Crusher Dust' setting bed as per manufacturers installation specifications. 'Softfall' rubber matting to be installed below synthetic turf where it encroaches on any fall spaces for playground equipment.
- RUBBERISED SOFTFALL SURFACE FOR PLAYSPACES: To be installed as per manufacturers installation details & specifications.
- MAINTENANCE: The Landscape Contractor should provide a minimum 24 month establishment maintenance program. Which would include the following:
  - Regular weed control in garden beds and inside tree guards
  - Replenishment of mulch annually for the first two years of a planting
  - Replacement of dead plants (with the same approved species) to stop weed invasion on exposed ground
  - The removal and recycling of tree guards/stakes when the plants are established and have grown beyond the protection of the guards.
  - Accent plants to be pruned of old leaves only. Allow natural shape to develop. Maintain at sizes no greater than those listed in the plant key. Cut back small accent plants biannually after main flowering period. Evergreen shrubs as hedges to be maintained at size nominated in plant key.



© COPYRIGHT All rights reserved. Faulkner & Chapman Landscape Design has granted a licence to the principal to use this document for its intended purpose. No unauthorized copying is permitted.		Project Name <b>Proposed Childcare Centre, 1 Baynes Park Road, Monbulk, VIC</b>		Designed <b>N.F.</b>		10 Maysbury Avenue, Brighton, Vic. 3186 mb: 0417 381 304 e-mail: falknerchapman@outlook.com		Scale <b>1:200 @ A1</b>			
Drawing Title <b>LANDSCAPE PLAN</b>		Drawing No. <b>01</b>		Rev. <b>01</b>							
Client <b>ASL</b>		Approved <b>G.C.</b>		Date <b>19.05.2023</b>		Drawing Ref. <b>C:\USERS\GREGG\ONEDRIVE\LANDSCAPE PLANS 2023\1BAYNESPARKLP1.DWG</b>		Project Ref. <b>1BaynesParkLP1</b>		Rev. <b>01</b>	
Rev Description Date By App.		01 Additional planting as requested by Council 12.05.23 NF GC		Date By App.		Landscape Architecture and Horticultural Consultancy Members of The Australian Institute of Landscape Architects, Landscape Industries Association of Victoria		Scale		Project Ref.	